

2019

ANNUAL REPORT

STATEMENT OF FINANCIAL POSITION | DECEMBER 31, 2019

REVENUE

Handling Fees	2,675,573	5.65%
Contributions	1,772,532	3.74%
Grants	1,407,591	2.97%
Other Revenue	889,635	1.88%
Non-Cash	40,600,583	85.75%
Total	47,345,914	100%

Net Assets

Handling Fees: Cost-sharing with agency partners, who pay 6 to 18 cents per pound for most items.

Contributions: Gifts from individuals, companies and other organizations.

Grants: Income from charitable foundations and government agencies.

Non-Cash: The value of food and other in-kind donations received.*

EXPENSES

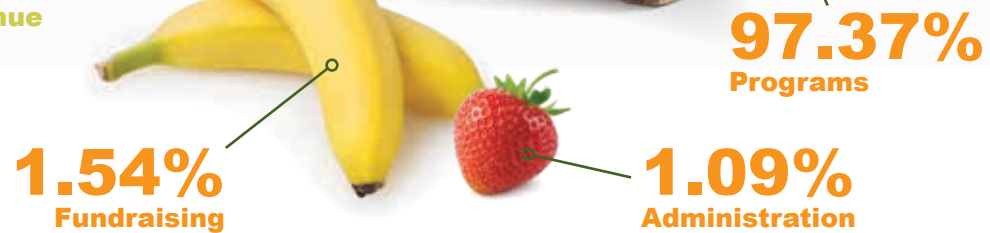
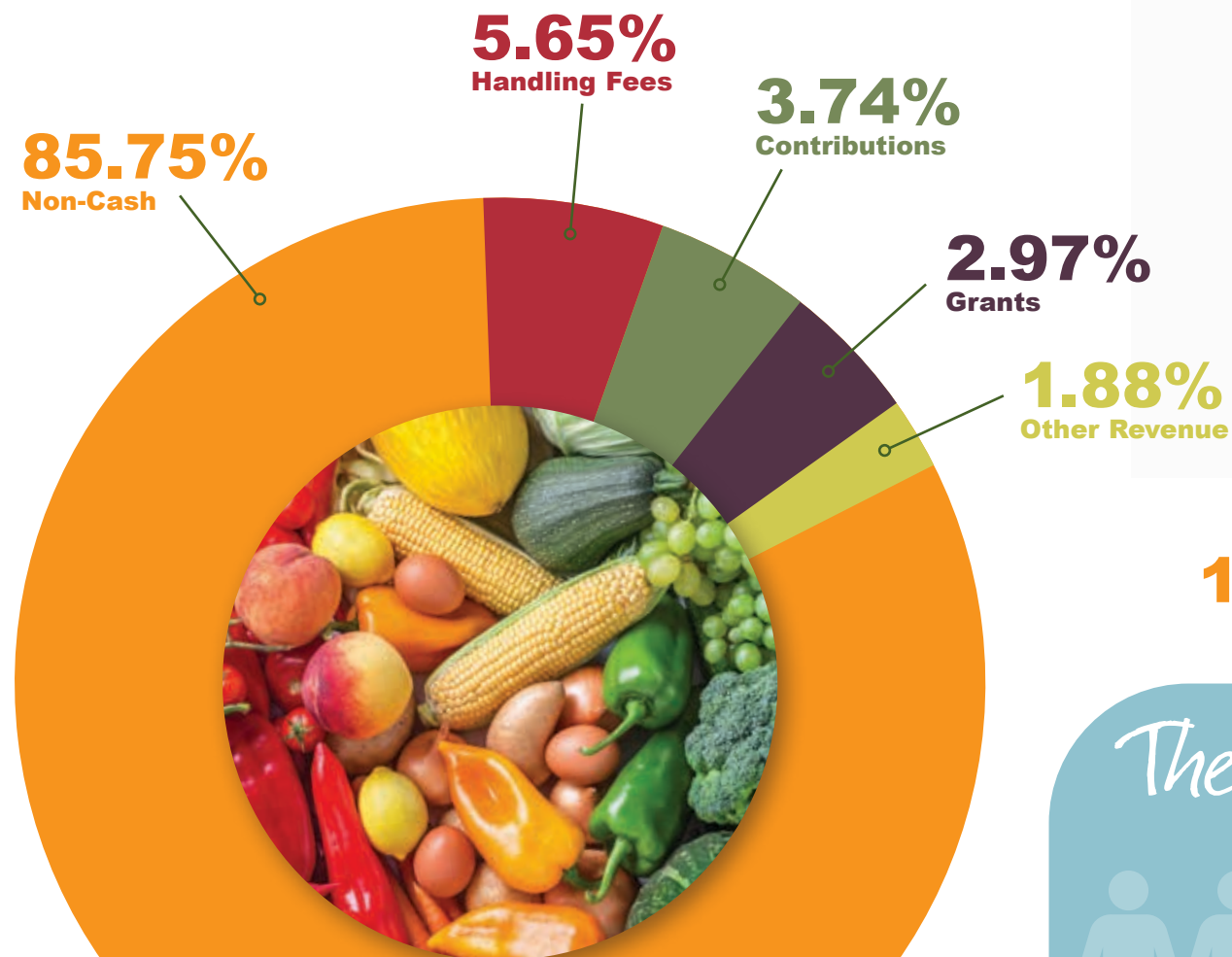
Programs	44,129,847	97.37%
Fundraising	699,041	1.54%
Administration	492,808	1.09%
Total	45,321,696	100%

Programs: All expenses related to reclaiming, storing and distributing food in the 40 counties we serve. Includes the value of \$36,041,721 for food and grocery items distributed.

Fundraising: The cost of communications and development activities.

Administration: Cost related to administrative and accounting activities, along with other expenses not directly connected to food distribution.

* Value based on an annual analysis done by the Feeding America National Organization by an independent auditor KPMG.



RESCUED and REPACKED

Last year, our volunteers worked to sort, repackage, and label the millions of pounds of food that we received from our generous food donors. In 2019, our volunteers repacked 3,573,982 pounds of food, equivalent to 2,987,318 meals.

Volunteers.....	944
First-time Volunteers	792
Hours.....	23,975
Meals Per Hour	124

The VOLUNTEERS TOP 5 GROUPS

MOKA.....	2,733
Golden Kiwanis.....	942
Bethlehem Lutheran Church.....	441
Traverse City Immaculate Conception	390
Aldersgate United Methodist Church.....	345

HOURS

The NUMBERS

2019

TOP FOOD DONORS

Feeding America West Michigan receives food from hundreds of farmers, manufacturers, distributors and retailers who donate every conceivable type of food from fresh lettuce and frozen meat to breakfast cereal and milk. In 2019, **311 donors** provided a total of **27,817,269 pounds of food**.

ORGANIZATION	POUNDS DONATED
Meijer	1,856,034
Sam's Club	1,648,187
Walmart	1,510,181
Costco	693,965
Gordon Food Service	618,694
SpartanNash Stores	494,566
Coca-Cola North America	459,383
ALDI	418,469
National Food Group	378,000
General Mills	359,696
Old Orchard Brands LLC	320,625
Country Fresh Dairies, Inc.	319,630
Sysco Grand Rapids	306,215
Target	299,600
Kelloggs Company	215,373
Marker Farms	177,665
Cedar Valley Packing, Inc.	166,916
National Assoc. of Letter Carriers	157,039
Heeren Brothers INC.	145,785
North Bay Produce	139,268
Top 20 Donors Total	10,685,291

TOP AGENCY PARTNERS

AGENCY	CITY	LBS. DIST.
Community Food Club	Grand Rapids	470,028
Family Network	Wyoming	373,727
Salvation Army Adult Rehab	Grand Rapids	278,346
United Church Outreach Ministry	Wyoming	269,794
TrueNorth Community Services	Fremont	231,990
Holy Family Healthcare	Hartford	201,937
Senior Meals Program Food Pantry	Grand Rapids	172,212
Streams of Hope Food Center	Grand Rapids	162,153
Love INC Newaygo County	Grant	157,907
South End Community Outreach Ministry	Grand Rapids	148,086

TOP MOBILE PANTRY PARTNERS

AGENCY	CITY	LBS. DIST.
Muskegon County Cooperating Churches	Muskegon	552,865
Love in Action - Tri-Cities	Grand Haven	273,906
Good Neighbor Services	Manistique	197,610
Family Network	Wyoming	194,278
Cadillac Revival Ministries	Cadillac	152,333
Ishpeming Community	Ishpeming	150,114
Barryton Area	Barryton	119,515
Wesley Park UMC	Wyoming	118,785
Bridge Academy/Kinexus	Benton Harbor	114,608
Abundant Life Mission	Menominee	114,044

COUNTY DISTRIBUTION TOTALS

COUNTY	TOTAL LBS.	ACTIVE AGENCIES IN (YEAR)
Alger	120,629	7
Allegan	569,810	19
Antrim	530,604	15
Baraga	122,265	4
Benzie	325,780	6
Berrien	1,483,654	71
Cass	472,549	22
Charlevoix	413,075	19
Chippewa	412,744	24
Delta	431,181	16
Dickinson	340,130	13
Emmet	664,892	24
Gogebic	335,584	5
Grand Traverse	1,093,714	22
Houghton	728,754	26
Ionia	394,112	18
Iron	166,952	7
Kalkaska	304,242	6
Kent	7,094,416	271
Keweenaw	32,726	1
Lake	321,616	8
Leelanau	142,734	4
Luce	137,835	5
Mackinac	207,018	11
Manistee	185,289	12
Marquette	540,927	19
Mason	186,414	8
Mecosta	515,698	15
Menominee	190,299	7
Missaukee	124,844	9
Montcalm	472,967	21
Muskegon	1,225,307	33
Newaygo	1,134,413	25
Oceana	422,380	11
Ontonagon	129,450	4
Osceola	340,241	17
Ottawa	1,660,217	53
Schoolcraft	267,280	4
Van Buren	643,134	24
Wexford	435,484	19
Total	25,321,351	905
To other food banks*	497,649	

